



Where Generative AI
Meets Indian Ingenuity





All-in-One Computer ADPM

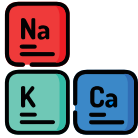

trueboard.ai

The Most Advanced Software for
Education & Collaboration

trueCONTENT




30000
3D Images, Icons
and Cliparts



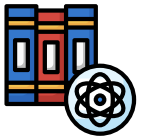
**Interactive
Periodic
Table**



3500
3D STEM Videos &
Simulation Games



e-BOOKS
Content from
Grade I to XII



trueTOOLS



Widgets

- Score Board
- Lucky Draw
- Split Screen
- Worksheets
- Magnifying Glass
- Spotlight & Curtain
- Pull Down Whiteboard



Multiple Tools

- Math Tools
- Text Editor
- Scientific Calculator
- Curved Text
- Sticky Notes
- Pixel Eraser
- Object Eraser
- Erase All



Activities

- Fill in the Blanks
- Flip Out
- Label Reveal
- Match Them Up
- Rank Order
- Super Sort
- Monster Quiz
- Blackboard

trueTOOLS



AI Tools

- Image Recognition
- Image OCR
- Text to Speech
- Speech to Text
- Math Solver
- Mind Maps
- Chat with AI



For Teachers

- Share Homework
- Check Assignments
- Create Reports
- Create Tests & Quizzes
- Generate Analysis
- Generate Ideas & Rubrics
- Generate Life Like Images



For Admins

- Monitor Usage
- Track Live Classes
- Decode Reports
- Manage Devices
- Create Data Insights
- Manage Content
- Track Lesson Progress

trueAi FEATURES



100+ Language

Identification
for OCR



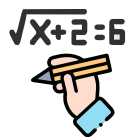
Ai Powered

Image
Generator



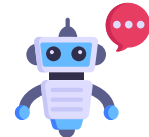
Math Solver

Auto solve handwritten
maths equations



Ai Chat

Ask anything !
Integrated Web
Search



Multiple Pens

Magic Pen, ABC Pen,
Rainbow Pen FX Pen
Laser Pen, Shape Pen,
Dotted Line Pen



Teaching Aids

Lesson Plans, Templates
Animations, Marketplace
Google Classroom





TRUEBOARD

All-in-One Computer



Up to 16GB RAM
& 256GB Memory



9H Toughened
Glass



60,000^h Hours
Screen Life



Zero Bonding
Panel



Mobile
Voting



Screen
Recorder



Type-C
Port



2 x 20W
Speakers



450 nits
Brightness



Subject
Library



Bluetooth
Connectivity



Anti Glare
Screen



4K UHD
Resolution



20 Point
Multi Touch



Easy Mind
Mapping



EDUCATION



CONFERENCING



ENTERTAINMENT

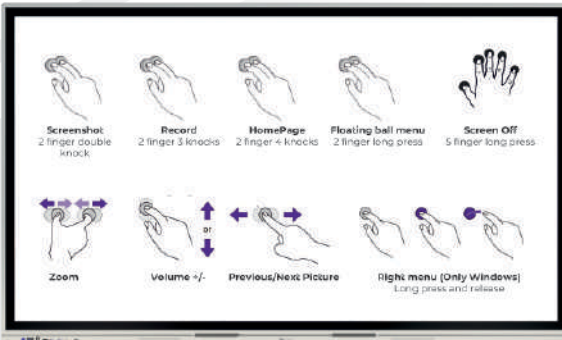
AiO Computer Hardware Features



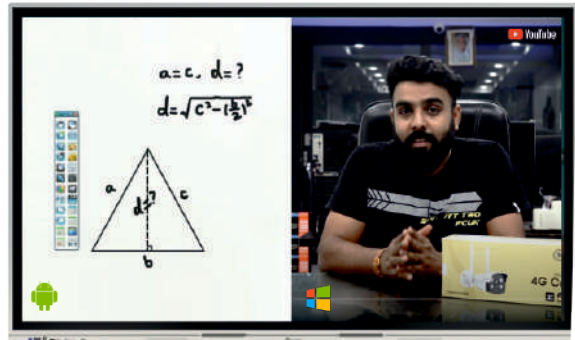
4mm Toughened & Heat Tempered Glass



Infinite White Board with Palm Rest Writing feature



Smart Hand & Touch Gestures for various operations & functions



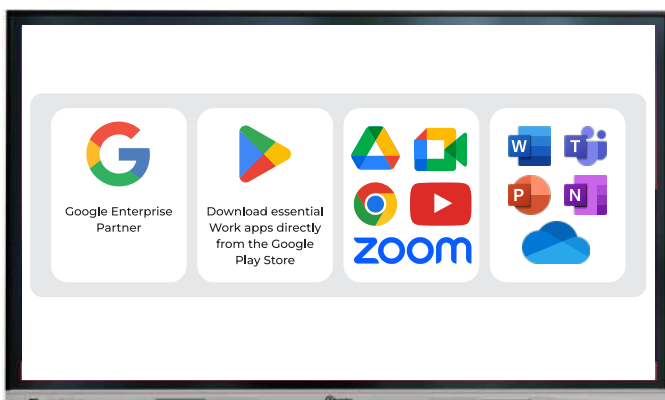
Smart Split Screen with Dual OS (Android + Windows)

Google EDLA Certified



Google EDLA-Certified AI-Powered All-in-One Computer

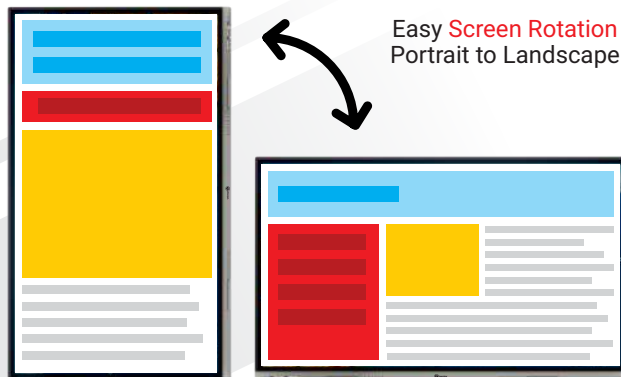
Secure Access to Google Play Apps



Your All-in-One Hub
Work, Connect, and Collaborate with Ease



Wireless Screen Sharing for up to 9 various devices



55" to 110" SCREEN SIZE

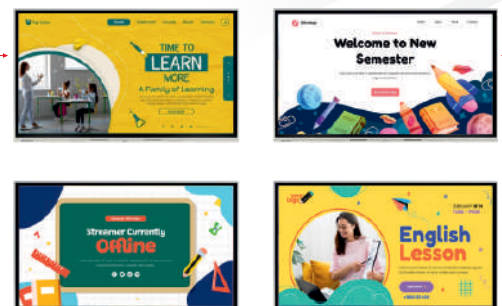
Widest range of sizes to best suit your requirements

Interactive Device Management System

MASTERFUL AND METICULOUS MANAGEMENT

- Remote Real-time Screen Control / View / Screenshot
- Application Management - Enable / Disable / Run / Uninstall
- Adjust Parameters - Brightness, Volume, Source, Languages
- Power management - Turn On/Off, Restart, Display On/Off
- Screen Lock Management - Lock, Un-Lock, Set Screen Lock
- Device-level usage history and reports

Remotely control your Display devices at various locations



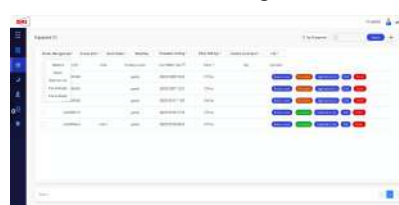
Gain control of the software and apps on all the devices



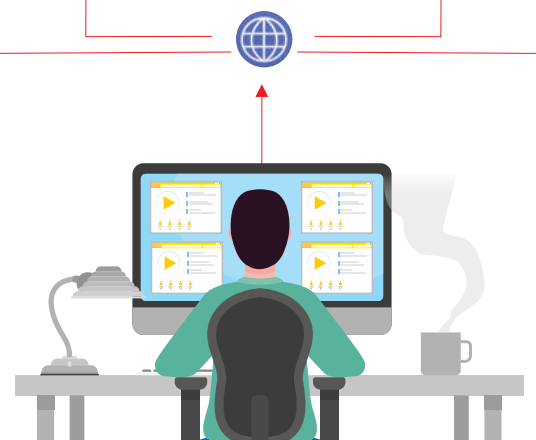
Secure your data through Private Server Integration



Send alerts or notifications to single / group of devices



Gain the power, screen and data control of your devices



TrueBoard 278.13cm (110 inch) 8GB/128GB Built-in-Camera



(Image For Reference Purposes Only)

Model No.	T291125-A
DISPLAY	
Diagonal Size	278.13cm (110 inch)
Bonding Technology	Zero Bonding
Display Orientation	Landscape
Screen Type	TFT LCD(Direct-LED Back light)
Aspect Ratio	16:9
Pixel Pitch	0.9987 (H) X 0.9987 (W)
Response	≤8ms
Resolution	3840 x 2160 pixels
Contrast Ratio	5000:1 Dynamic, 1200:1 Static
Brightness(cd/m ²)	400cd/m ² ±10%
Display Area	2438mm(H) x 1372mm(V) (96 in x 54 in)
Color	16.7 million colors
View Angle	H:178° V:178°
LED Lifespan	60,000* hours
SYSTEM	
OS	Android 14
CPU	Quad Core Cortex-A37, 1.4 GHz
Chipset	Pro-9679
GPU	Mali-G52 MP2 (2EE)
RAM	8GB
Storage	128GB
OSD Language	English, Hindi, Gujarati, Telgu etc
Video Format	PAL, NTSC
Optimum Resolution	3840 x 2160 pixels @ 60 Hz

Video / Picture Decoding	<ul style="list-style-type: none"> - AVS2 MP-10@L8.2, 4Kx2K@60fps - ITU-TH.265 Main 10Profile@Level 5.1 High-tier, 4Kx2K@60fps - VP9 Profile 2 10-bit, 4Kx2K@60fps - SHVC, ATSC 3.0(For H.265) - FHD HFR(For H.265) - H.264 AVC HP@L5.1 up to 4Kx2K@30fps - H.264 MVC up to 1080P@60fps - MPEG-1 MP/HL up to 1080P@60fps (ISO-11172) - MPEG-2 SP@ML,MP@HL, up to 1080P@60fps (ISO-13818) -SuperClear, smooth edge -Support 3D detection -Support 2D to 3D -Support 0D/1D/2D Local Dimming -Support Ambi-Light -Support video rotation - AVS2 MP up to 4Kx2K@60fps - MPEG-4 ASP@L5 up to 1080P@60fps (ISO-14496) - WMV/VC-1 SP/MP/AP up to 1080P@60fps - AVS-P16(AVS+) /AVS-P2 JiZhun Profile up to 1080P@60fps - Multiple language and multiple format sub-title video support - MJPEG and JPEG unlimited pixel resolution decoding (ISO/IEC-10918) - Supports JPEG thumbnail, scaling, rotation and transition effects - Supports *.mkv,*.wmv,*.mpg, *.mpeg, *.dat, *.avi, *.mov, *.iso, *.mp4 and *.jpg file formats
Picture / Video Encoding	<ul style="list-style-type: none"> - Independent JPEG and H.264 encoder with configurable performance/bit-rate - JPEG image encoding - H.264 video encoding up to 1080P@30fps with low latency
Support Resolution	3840x2160, 1920x1080, 1680x1050, 1600x1200, 1440x1050, 1360x768, 480i, 480p, 576i, 576p, 720p, 1080i, 1080p, 4K
I/O Port	
Rear Input	HDMI2.0 x 2, USB3.0 x 1, USB2.0 x 2 , SPDIF x 1, RS232 x 1, Touch USB x 1, Rj45 Line in/Mic in(3.5mm) x 1, Line Out/Earphone(3.5mm) x 1.
Front Input	USB 3.0 x 3 (Both work on Android and OPS) , HDMI2.0 x 1, Touch USB x 1, Type-C x 1, Light Sensor x 1
Media Format	
Audio	MP3, WMA, WAV, APE, FLAC, AAC, OGG, M4A,3GPP
Video	H.264,VP8, RV, WMV, AVS, H.263, MPEG4
Picture	JPG, BMP, PNG
Touch Features	
Touch Type	Infra-red Touch, 20 Point Touch (Android), 40 Points (Windows)
Glass Hardness	9H (Pencil), 7 (Mohs)
Glass Type	4mm Mohs, Heat Tempered Glass, Explosion Proof, Anti Glare, etc
Response Time	≤5ms
Touch Object	All Opaque objects, such as Finger, Stylus Pen etc.

Touch Resolution	32768 x 32768 pixels
Touch Accuracy	1mm
Tracking Rate	4m/s
Scan Rate	200Hz
MTF	60million touch by each points
Minimum Touch Object	≥ 1MM
Essential Apps	Including Whiteboard, Annotate, Timer, Calculator, Split Screen, Record, Spinner, Screen Capture, Screen Record, Screen Share, Browser, PDF reader, Media Player, Screen Cast, etc.

Audio

Speaker	2 x 20W
---------	---------

MICROPHONE

Microphone Type	Linear array microphone
Microphone Quantity	8
Noise Ratio	67db
Sensitivity	-26 ± 1 db
Pickup Voice Distance	≤ 10meters
Sampling Rate	16KHz
Features	Echo Cancellation
	Environmental noise suppression
	Sound source localization
	Sound Source tracking
	Reverberation removal
	Support for automatic gain

CAMERA

Optical Lens Size	1/3.06" COMS Sensor
Resolution	48 Mega pixel (8000 x 6000 / 4160 x 3120 / 3840 x 2160 / 2560 x 1440 / 1920 x 1080 / 1280 x 720 / 1024 x 576 / 960 x 540 / 640 x 360)
Pixel Dot	1.12um x 1.12um
Video Compressed Format	MJPEG / YUV / H.264 / H.265
3D Noise Reduction	Support multi-level noise reduction
Shutter Type	Electronic Rolling shutter
Noise Ratio	≥ 39dB
Dynamic Range	≥ 45dB
Maximum Frame Rate	30FPS
View Angel	D: 117°
Distort	≤ 6%
AEC/Gain/White Balance	Auto
Video Format	2160P, 1920P, 1080P, 720P, 480P etc.
Lens	2.8mm Fixed
Communication Type	UVC

AI Features

AI Gesture	Closely Place your plam in front of the camera to turn on or off the Voice & Body Tracking AI Camera
Note	Camera Resolution 13 Megapixel Shows In Android & Windows 48 Megapixel Max.

Panel Management

OTA	Yes
DMS (Device Management System)	<ul style="list-style-type: none">• Display Product information (Like Location, IP,MAC, Operation System version, Specification etc.)• User management• Device management(Power on/off, Screen Lock, Sent Message, Program work flow,• Running log• Group management
Own APK Store Market	Manage private APK store market

Physical Specifications

Handel	4
Panel Net Weight (Kg)	86 KG
Packed Weight (Kg)	98 KG
Panel Dimensions	2500mm x 1464.1mm x 91.4mm (W x H x D) (without Wall Mounting Bracket or Floor Stand
Packed Dimensions	2680mm x245mm x 1690mm
VESA Mount Point mm	1000 x 800

Power

Power Requirements	AC 100 ~ 240V AC, 60/50Hz
Energy Star Power Consumption	Normal \leq 750W
Power Consumptions (standby)	\leq 0.5W
Ultra-Quiet Fanless Design	Yes

Environmental

Operating Temperature	0°C to 40°C(32°F to 104°F)
Storage Temperature	-15° to 55°C(-5°F to 131°F)
Operating Humidity	20% to 80% non-condensing humidity
Storage Humidity	20% to 90% non-condensing humidity

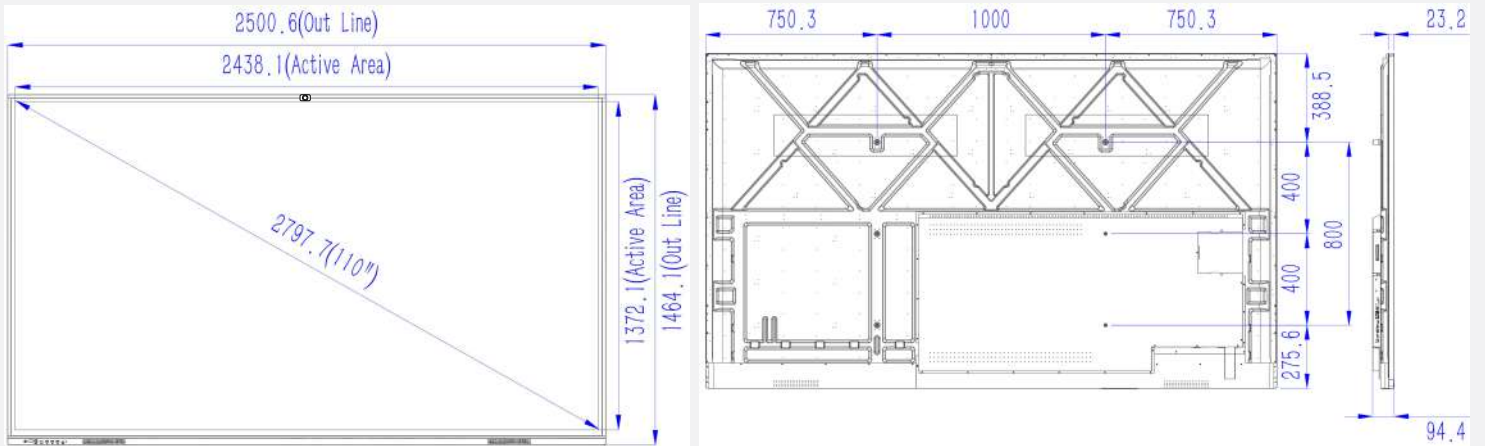
Packed Contents

Kit	1 x AiO ADPM , 1 x Remote Controller, 1 x Wall Mount Bracket, 2 x Stylus, 1 x Power Cable.
-----	--

Other

Option	Floor Stand Bracket
Certification	BIS, CE, FCC, RoHS

Dimension



(Unit:mm)

Additional Accessories (Optional)

OPS ADPM

CPU	Option : Core i5 / Core i7
RAM	Option : 4GB, 8GB, 16GB
Hard Disk	SSD 128GB~2TB or HDD 500GB~4TB

* Note: Product specifications are subject to change without prior notice.